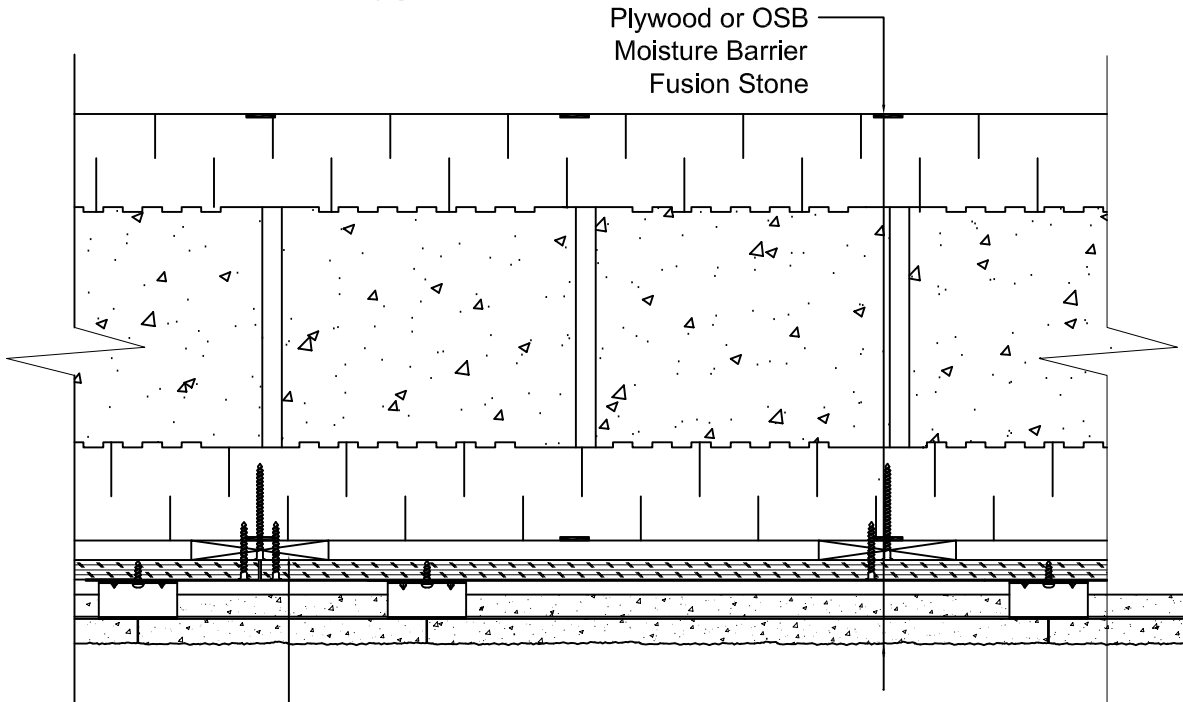




TYPICAL CROSS SECTION FOR ICF WALL

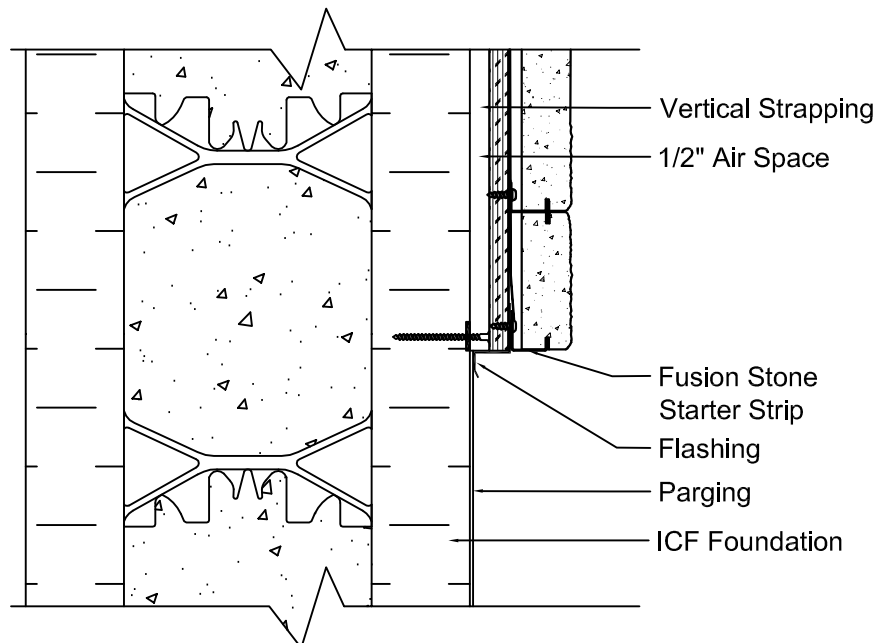
DRY-STACK

ICF (Exposed or Concealed Webs)
 PT Vertical Strapping @ 16" O.C. to allow 1/2" Air Space



Fasten Vertical 1"x4" PT Strapping to ICF Webs at 16" O.C. with #6 or #8 1-1/4" Exterior Grade Screw @ 16" O.C. Max. Spacing both Vertically and Horizontally

Plan View



Section View at Starter Strip

DS-22	DRAWN:
	SEPT/15/2014
	REV. _ _